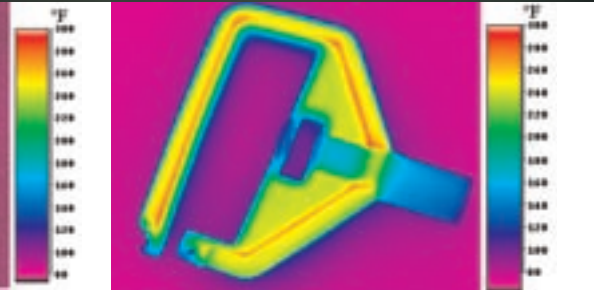
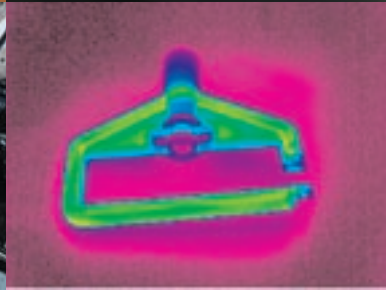


Brush Wellman uses sophisticated infrared photography ▶ at plastic injection mold operations to demonstrate the superior thermal management properties of its moldMAX® alloys.

At Rubbermaid Commercial Products in Winchester, Virginia, the conversion to moldMAX® HH is generating substantial benefits in the production of a mop holder part. Because of the more efficient heat distribution, Rubbermaid has experienced better cycle times, an overall improvement in part quality due to the uniform cooling provided by the alloy, and lower production scrap rates. Rubbermaid reports that the moldMAX® mold performs substantially better than the previous tool steel mold with lower mold maintenance costs. Payback on the investment was achieved in less than three months. Infrared images (below center) show the part cooling uniformly with MoldMAX® mold cores vs. uneven cooling in steel molds (right).



▼ Clean and efficient energy from fuel cells has led to the development of a number of commercially viable applications ... with more on the way.

Technical Materials, Inc. is helping to meet this growth with the development of clad metals systems for several leading fuel cell technologies. Fuel cell designers are evaluating and specifying clad metals from TMI for their outstanding electrical and corrosion-resistant properties as replacements for costly graphite and polymer/carbon composites. TMI materials provide unique opportunities to optimize fuel cell performance and lower costs – key enablers that support the evolution of this energy source. Below left: a compact power plant produced by FuelCell Energy, Inc., a TMI customer. Below right: Bi-polar plates made from TMI materials for use in other fuel cell designs.

