



# Pedestrian Safety

THE FIRST LINE OF DEFENSE

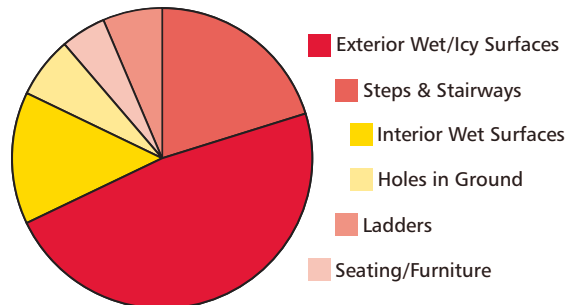
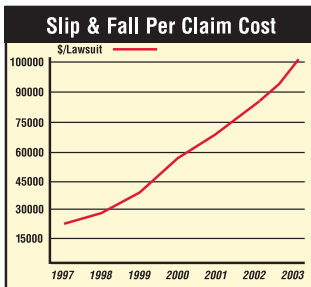


# Pedestrian Safety System

## YOUR FIRST LINE OF DEFENSE AGAINST COSTLY SLIP & FALL INJURIES

According to OSHA, slip, trip and fall accidents are the leading cause of injuries in commercial environments. Since 1980, injury lawsuits have risen by more than 300%. Warning patrons and employees of potentially dangerous areas is key to preventing injuries and avoiding these expensive lawsuits. Since there is no single item that can address all safety needs, a systematic approach is necessary.

Rubbermaid Commercial Products offers the most complete and innovative pedestrian safety system available. From standard floor signs to mobile barricades and talking cones, you'll find a solution that is sized just right for any facility and any safety warning need.



Six most common causes of slips, trips & falls.  
Source: NDS Database

**"FALLS ARE THE LEADING CAUSE OF EMERGENCY ROOM VISITS....AUTOMOBILE ACCIDENTS ARE #2."**

Source: National Floor Safety Institute





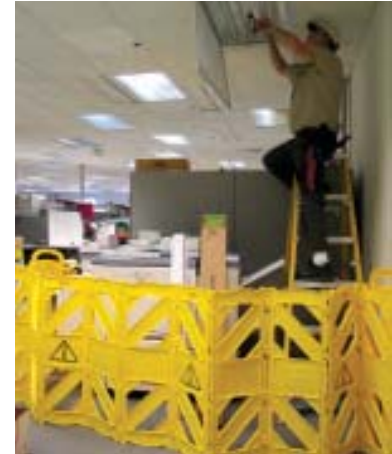
## MOBILE BARRIER

Easy to use, easy to see,  
easy to move, easy to store.

- 13 ft. long with 16 articulating panels, has two 5" non-marking wheels, and four locking straps to secure barrier in closed position.
- ANSI compliant color and graphics.
- In addition to being lightweight at 32 lbs, this barrier has a compact footprint of 2' x 13" for storage.
- Shipped assembled.



9S11



For indoor use. Flexible—can be set straight, curved or in a circle.

## MOBILE FENCE

Section off those dangerous areas quickly and easily.

- For indoor and outdoor use
- Fence is 24 ft. long with six 4 ft. articulating panels, and seven 4" non-marking casters.
- Three of the casters have a locking feature.
- For signage purposes, fence is designed with six panel areas that will accommodate standard safety signs.
- Fence weighs 85 lbs. and has ANSI compliant color.
- This fence is flexible, it can be set straight, curved or in a circle.
- Fence has a compact footprint...4' x 13" for easy to storage when closed.
- Semi-assembled: only caster installation required.



9S13



6287, 2 qty.  
as shown

## PORTABLE CONE BARRICADE SYSTEM

Complete, expandable system for quick deployment

- One 36" four-sided Safety Cone with a belt cassette (7' x 3"), and one steel double weight ring (27.2 lbs.).

# Pedestrian Safety System

## STABLE SAFETY SIGN

Unique “no-tip” design and bold graphics quickly capture pedestrian’s attention.



Designed for convenient storage or transport on Janitor Cart (#6173) or Rim Caddy (#9W87)



Self-opening feet give sign large, stable base.

Low center of gravity helps prevent tipping when bumped, kicked or wind blown.



Only 1½” thick when stored.



9509

## AUDIO GUARD

Motion triggers audio warning and flashing lights.

- Warn pedestrians with your recorded 12 second message or play one of six pre-programmed messages. (Volume is adjustable.)
- Can be used as multi-lingual messaging station.
- Senses motion up to 25’, 360°.
- Ideal for entrance ways and high traffic areas.
- Locks securely on top of 36” cones.



6282

## SAFETY CONES & ACCESSORIES

Highly visible, bright yellow hazard protection system with multi-lingual warning messages.



## FLOOR SAFETY SIGNS

Folding design for convenient storage and transport. Multi-lingual options.

6112-77 & 6114-77



### FOLDING SAFETY CONE

Large sign folds with a twist, to fit into compact storage shell.

- Storage shell mounting hardware includes tape, strap & screws.
- Cone itself has a loop for storage.
- Made of spring steel & durable, cleanable fabric.
- Highly visible. 30% more surface area than competitive fabric safety cones.



Large when deployed (20" h x 18" w), compact when folded and stored in shell (9" diameter).



9507



### POP-UP SAFETY CONES

This collapsible, automatically deployed cone comes with a storage tube for mounting to wall. Durable, yet folds compactly when not in use.



9500

### HANGING SAFETY SIGNS

Essential safety signs for stairways and doors.



9516

Now opens to fit 48" doors

6110

### OVER-THE-SPILL™ SYSTEM

Slip resistant pads quickly cover spills and alert pedestrians.



4254

4251

4254 on 6112

# The Right Tool For Any Job



9S11



9S13



6287, 2 qty.  
as shown

## BARRIERS / BARRICADES

Item No.	Description	Dimensions (U.S.)	Dimensions (Metric)	Color	Pack
9S11	Mobile Barrier	Open: 40" h x 13' l x 1" w Closed: 40" h x 2' l x 13" w	Open: 101.6 cm x 396 cm x 2.54 cm Closed: 101.6 cm x 61.0 cm x 33.0 cm	YEL	1
9S13	Mobile Fence	Open: 40" h x 24' l x 2" w Closed: 40" h x 4' l x 13" w	Open: 101.6 cm x 732 cm x 5.1 cm Closed: 101.6 cm x 122 cm x 33.0 cm	YEL	1
6287	Portable Barricade System Consists of: 36" cone, Belt Cassette & double weight ring	12¼" l x 12¼" w x 39¾" w	31.1 cm x 31.1 cm x 101.0 cm	YEL	1



6112 & 6114



6112-77 & 6114-77



6112-78 & 6114-78



9S09



9S09-25

## SAFETY SIGNS

Item No.	Description	Dimensions (U.S.)	Dimensions (Metric)	Color	Pack
6112	Floor Sign with "Caution" Imprint, 2-Sided, English, Spanish, French	26" l x 11" w x 12" d	66 cm x 27.9 cm x 30.5 cm	YEL	6
6112-77	Floor Sign with "Caution, Wet Floor" Imprint, 2-Sided, English only	26" l x 11" w x 12" d	66 cm x 27.9 cm x 30.5 cm	YEL	6
6112-78	Floor Sign with "Closed" Imprint, 2-Sided, English, Spanish, French, German	26" l x 11" w x 12" d	66 cm x 27.9 cm x 30.5 cm	YEL	6
6114	Floor Sign with "Caution" Imprint, 4-Sided, English, Spanish, French	38" l x 12" w x 16" d	96.5 cm x 30.5 cm x 40.6 cm	YEL	6
6114-77	Floor Sign with "Caution, Wet Floor" Imprint, 4-Sided, English only	38" l x 12" w x 16" d	96.5 cm x 30.5 cm x 40.6 cm	YEL	6
6114-78	Floor Sign with "Closed" Imprint, 4-Sided, English, Spanish, French, German	38" l x 12" w x 16" d	96.5 cm x 30.5 cm x 40.6 cm	YEL	6
6184	20' (6.1 m) Barrier Chain for 6114 and 36" cones	1½" l x ¾" w x ¼" dia	3.8 cm x 2.2 cm x 0.6 cm	YEL	4
9S09	Stable Safety Sign with "Caution" Imprint, English, Spanish, French	opened 26" l x 13" w x 13¼" d closed 26" l x 13" w x 1½" d	66 cm x 33 cm x 33.6 cm 66 cm x 33 cm x 3.8 cm	YEL	6
9S09-25	Stable Safety Sign with International Wet Floor Symbol	opened 26" l x 13" w x 13¼" d closed 26" l x 13" w x 1½" d	66 cm x 33 cm x 33.6 cm 66 cm x 33 cm x 3.8 cm	YEL	6



9S07



9S07-25



9S00

## FABRIC SAFETY CONES

Item No.	Description	Dimensions (U.S.)	Dimensions (Metric)	Color	Pack
9S00	Pop-Up Safety Cone, 20" (50.8 cm) with "Caution" Imprint, English, Spanish, French	20" h x 21" w x 21" d Tube 22½" h x 3" w x 2½" d	50.8 cm x 53.3 cm x 53.3 cm	YEL	12
9S01	Pop-Up Safety Cone, 30" (76.2 cm) with "Caution" Imprint, English, Spanish, French	30" h x 21" w x 21" d Tube 22½" h x 3" w x 2¾" d	73.7 cm x 53.3 cm x 53.3 cm	YEL	12
9S07	Folding Safety Cone with "Caution" Imprint, English, Spanish, French	opened 20" h x 18¾" w x 13" d closed 8" h x 8" w x 1½" d shell 9" h x 8¾" w x 1¾" d	50.8 cm x 46.6 cm x 33.0 cm 20.3 cm x 20.3 cm x 3.81 cm 20.3 cm x 22.2 cm x 4.44 cm	YEL	12
9S07-25	Folding Safety Cone with International Wet Floor Symbol	opened 20" h x 18¾" w x 13" d closed 8" h x 8" w x 1½" d shell 9" h x 8¾" w x 1¾" d	50.8 cm x 46.6 cm x 33.0 cm 20.3 cm x 20.3 cm x 3.81 cm 20.3 cm x 22.2 cm x 4.44 cm	YEL	12

6282



## SAFETY CONES

Item No.	Description	Dimensions (U.S.)	Dimensions (Metric)	Color	Pack
6184	20' (6.1 m) Barrier Chain for 6114 and 36" cones	1½" l x ¾" w x ¼" dia	3.8 cm x 2.2 cm x 0.6 cm	YEL	4
6276	Safety Cone with "Caution" Imprint, English, Spanish, French	12¼" l x 12¼" w x 36" h	31.1 cm x 31.1 cm x 91.4 cm	YEL	5
6276-77	Safety Cone with "Caution, Wet Floor" Imprint, English, Spanish	12¼" l x 12¼" w x 36" h	31.1 cm x 31.1 cm x 91.4 cm	YEL	5
6276-87	Safety Cone with "Caution, Safety First" Imprint, English, Spanish	12¼" l x 12¼" w x 36" h	31.1 cm x 31.1 cm x 91.4 cm	YEL	5
6277	Safety Cone with "Caution" Imprint, English, Spanish, French	10½" l x 10½" w x 25¾" h	26.7 cm x 26.7 cm x 65.4 cm	YEL	6
6277-77	Safety Cone with "Caution, Wet Floor" Imprint, English, Spanish	10½" l x 10½" w x 25¾" h	26.7 cm x 26.7 cm x 65.4 cm	YEL	6
6284	Weight Ring, fits all 36" (91.4 cm) Cones	12½" l x 12½" w x 1" h	31.8 cm x 31.8 cm x 2.5 cm	BLA	1
6285	Flashing Hazard Light, fits 25" and 36" Safety Cones	1" dia x 9¾" h	2.5 cm x 24.8 cm	RED	12
6286	Lock-in Sign Holder, fits 25" and 36" Safety Cones	6" l x 2¾" w x 1½" h	15.2 cm x 7 cm x 5.1 cm	BLA	12
6282	Audio Guard™ Deluxe	7½" h x 5¾" w x 5¾" d	19.1 cm x 14.6 cm x 14.6 cm	ORAN	1
6289	Audio Guard™ Deluxe with 6276 Safety Cone	43" h x 12¼" w x 12¼" d	109.2 cm x 31.1 cm x 31.1 cm	ORAN	1

9516



6110



## HANGING SAFETY SIGNS

Item No.	Description	Dimensions (U.S.)	Dimensions (Metric)	Color	Pack
6110	Hanging Safety Sign with "Caution" Imprint, English, Spanish, German	19½" l x 4¼" w	49.5 cm x 10.8 cm	YEL	6
9515	Site Safety Hanging Sign with "Closed for Cleaning" Imprint, English only	Closed: 13" h x 25" w x 1" d Open: 13" h x 49" w x 1" d	33 cm x 63.5 cm x 2.5 cm 33 cm x 111.8 cm x 2.5 cm	YEL	6
9516	Site Safety Hanging Sign with "Closed for Cleaning" Imprint, English, Spanish, French	Closed: 13" h x 25" w x 1" d Open: 13" h x 49" w x 1" d	33 cm x 63.5 cm x 2.5 cm 33 cm x 111.8 cm x 2.5 cm	YEL	6

4251



4254



4254 on 6112



## OVER-THE-SPILL™ SYSTEM

Item No.	Description	Dimensions (U.S.)	Dimensions (Metric)	Color	Pack
4251	Over-the-Spill™ Station Kit includes: Pad Dispenser, 20 Large Pads & Fasteners	21" l x 17¾" w x 15¾" d	53.3 cm x 45.1 cm x 4.1 cm	YEL	6
4252	Over-the-Spill™ Station Pads, Large; Refill Pads for 4251, Contains 20 Pads	20" l x 16½" w	50.8 cm x 41 cm	YEL	12
4253	Over-the-Spill™ Station Pads, Medium; Refill Pads for 4251, Contains 20 Pads	16½" l x 14" w	41.9 cm x 35.6 cm	YEL	12
4254	Over-the-Spill™ Pad Tablet; Contains 20 Pads	16½" l x 14" w	40 cm x 35.6 cm	YEL	12

# Get More Answers From the Experts.

**PLANNING, TRAINING AND STRONG SAFETY SYSTEMS ARE THE KEY TO A GOOD SAFETY RECORD.**

## **RCPWORKSMARTER.COM**

offers solutions and products to resolve your pedestrian safety issues.

- Tools to identify and resolve potential safety problems
- Tips on reducing liability
- Printable materials for training
- Industry specific details
- Detailed product information



9T73 Cleaning Cart with Accessories.



A **Newell Rubbermaid** Company

©2006 by Rubbermaid Commercial Products LLC  
3124 Valley Avenue, Winchester, VA 22601  
9/06 MP 35M SM618R USA

Customer Service: 1-800-347-9800  
www.rubbermaidcommercial.com

**Work Smarter.**

